



**STAINLESS STEEL
PRO[®] LOGGER**
Recording thermometers



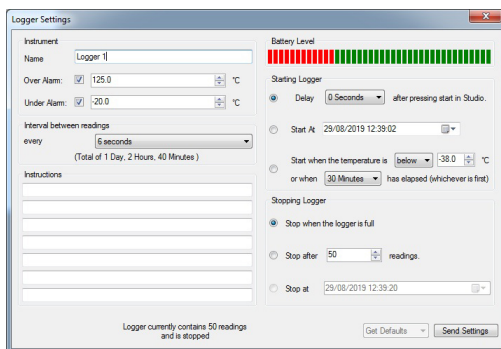
Quick Start Guide

PC SOFTWARE INSTALLATION

Install ThermaData® Studio which can be downloaded free from our software and apps page at etilt.com For further queries, please contact our technical sales on 01903 202151 or technical@etilt.com Remove old versions of ThermaData Studio software prior to installing a new version.

SETTING UP THE LOGGER

- Unscrew the USB end cap (with the hole in it).
 - Connect the logger to the PC using a USB-C® cable.
 - The logger will automatically download a pdf of the log it has recorded. Whilst this is happening the Red LED next to the USB connector will flash.
 - The logger will pop up as being recognised as a Mass Storage Device on your PC.
 - Select the 'Instrument Settings' button on the 'ThermaData' tab of ThermaData Studio.
 - If you have more than one instrument plugged in you will need to select the correct serial number for your logger from the drop down box.
- Fill in all required fields including Start/Stop method, Alarm limits, Sample rate and name.
- There are an optional 7 instruction lines that will appear on the auto generated pdf.
 - Select the 'Send Settings' button at the bottom of the window.
 - A pop-up window will confirm you want to proceed.
 - Now when you are ready to start the logger you must select the 'Start' button at the bottom of the window (Unless you chose a 'Start At Time' option which does not require the START button).
 - You can confirm the logger has started with your preferred start method by checking the text under the 'Instructions' in the Settings window.
 - The logger can now be disconnected and the end cap re-fitted ensuring the O-Ring is undamaged and not twisted so that the unit remains watertight.



READING THE LOGGER

- Allow the logger to cool so that it can be handled before connecting to a PC using the USB-C cable.
- The Red LED next to the USB connector will flash while the automatic pdf summary is generated (this can take up to 40 seconds for 16,000 readings).
- The pdf summary will pop-up as a Mass Storage Device, which can be saved to your selected folder.
- Alternatively, if you want to interrogate the data then open ThermaData Studio. (See PC Software Installation)
- Select the 'Download' button on the 'Home' tab.
- A data-download progress bar will appear. 16,000 readings can take up to 20 seconds to download.
- Select whether to 'Continue' which saves the data with a default name/location and opens it, or 'Save As'.
- A Data Summary window and a Graph will be displayed.
- To view the individual readings select the 'Data' button on the 'Home' tab.

BATTERY CHANGE

This Instrument is fitted with a Lithium 2/3 AA 3.6V non-rechargeable SL-561 Tadiran battery (high temp).

Failure to use the same type of battery could cause errors, failure or even damage to the logger.

The battery level is shown in the Status & Settings windows using ThermaData Studio. If the battery needs replacing, unscrew the sensor end cap using an appropriate sized spanner. Slide the metal body down to expose the battery and replace with new, noting polarity (flat negative end to the spring contact).

Note: Your hands contain static, therefore handling of the PCB must be kept to an absolute minimum.

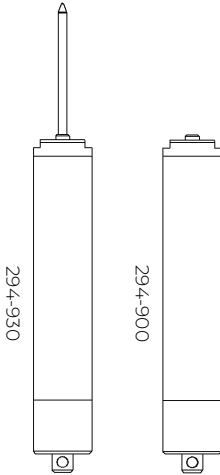
Slide the body of the instrument back up and tighten the Sensor Cap, ensuring the O-Ring is undamaged and not twisted so that the unit remains watertight.

ATTENTION

- This instrument is NON-Rechargeable.
- Do not exceed a USB input of 5V.
- Please use the USB-C cable provided (no lead with a greater length of 3m should be used).

ACCESSORIES/RELATED ITEMS

Sensor Cap



USB Cap



USB-C® Cable
(812-510)



3.6V 2/3 AA
Lithium Battery
(409-110)

Note: Due to regular software updates, please visit the software page on our website etiltd.com to ensure you have the latest version.

GUARANTEE - This instrument carries a two-year guarantee against defects in either components or workmanship. During this period, products that prove to be defective will, at the discretion of ETI, be either repaired or replaced without charge. This guarantee does not apply to probes, where a six-month period is offered. The product guarantee does not cover damage caused by fair wear and tear, abnormal storage conditions, incorrect use, accidental misuse, abuse, neglect, misapplication or modification. Full details of liability are available within ETI's Terms & Conditions of Sale at etiltd.com. In line with our policy of continuous development, we reserve the right to amend our product specification without prior notice.

Full operating instructions can be found within the ThermaData Studio Software.



Manufactured by
Electronic Temperature Instruments Ltd
Worthing · West Sussex · BN14 8HQ
01903 202151 · sales@etiltd.com · etiltd.com

